

# GROUTING TECHNOLOGY *from A to Z*

EVERYTHING YOU NEED FOR **PERFECT JOINTS & CRACK REPAIRS**

LAST UPDATED: 10/2022



**24h DELIVERY**  
TO THE CONSTRUCTION SITE



**GOODS STRAIGHT**  
FROM THE WAREHOUSE



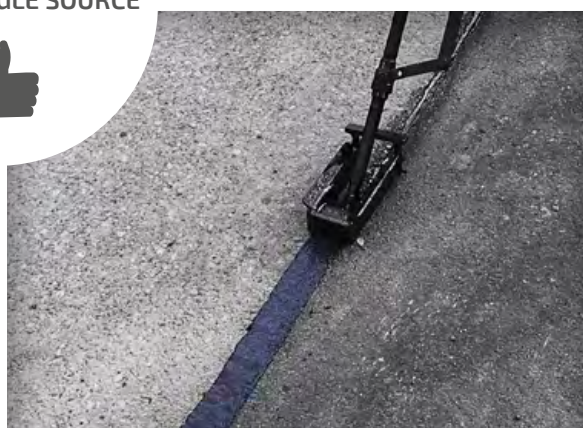
**PERSONAL**  
CONTACT



**ON-SITE**  
TRAINING



**EVERYTHING**  
FROM A SINGLE SOURCE





# The whole range of JOINT GROUTING TECHNOLOGY

## FROM A TO Z...

### ...WITH EVERYTHING YOU NEED.

We are a full-range supplier covering everything from A to Z with innovative grouting technology such as combi-kettles, hot-air lances, joint & crack routers from Richard Rupprecht GmbH, large kettles from Linnhoff & Henne GmbH & Co. KG, and our own high-quality Nadler grouting compounds.

Draw on more than 50 years of experience and let us put together the perfect solution for your needs. At Nadler, you can also rent equipment and request demos.

We also train your employees and making you specialists in joint technology.

## CONTENTS

	PAGE
Joint production	4
Crack preparation	6
Grouting Technology	8
Grouting compounds	10
Other products	12



## Specialist user training for JOINT AND CRACK GROUTING

We train you to close cracks and joints effectively to reduce further damage and warranty defects in the future.  
 >> Go to page 15 for more information.

**NADLER-AKADEMIE.DE**



## GOODS INCOMING

Once the goods have been produced, they go to our distribution warehouses in **Schweitenkirchen (Bavaria)** and **Barleben (Saxony-Anhalt)**.

The warehouses guarantee fast delivery of our goods throughout Germany and Europe.



## GOODS SAFE STORAGE

Once at the warehouse, goods are kept frost-free and ready for you in our heated warehouse buildings.

## FULL COMMITMENT

Order grouting compound by 4 p.m. and get fresh goods the very next day.

All thanks to our committed backoffice team, giving it their all every day. The lorry does not leave until your goods have been loaded.



## GOODS OUTGOING

At goods outgoing, your goods are packed so that you can work with them immediately, starting from just a single bucket.

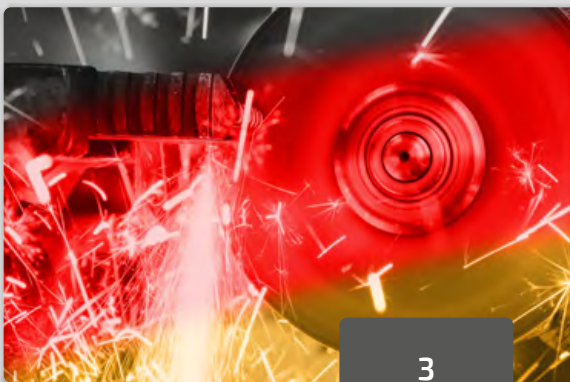
**The goods then arrive at your door in 24 hours.**



## MADE IN GERMANY

All our equipment for crack & joint repair are made in Germany. 99% of our grounding compounds are also produced in Germany.

**You can rely on our great quality for maximum performance on your construction sites.**







## JOINT PRODUCTION & PREPARING CRACKS

Self-propelled crack and joint routers with and without extraction for all standard applications.



### RFF-A CRACK AND JOINT ROUTER WITH EXTRACTION

Whether repairing crack damage or installing connection joints, the **RFF-A** is a great choice thanks to its practical features and ease of use.

The electro-mechanical drive, one-hand operation and the manoeuvrable chassis mean that even complex cracks can be prepared precisely for grouting.



**NO DUST**  
THANKS TO EXTRACTION

up to **5,000 rpm**



### HRF-L SLOW-TURNING CRACK ROUTER WITH DRIVE

Tungsten carbide crack router for repairing crack damage, installing connection joints and repairing joints.

In contrast to fast-rotating cutting tools, the HRF-L produces a rough joint edge, which ensures an excellent connection between the grout and the existing asphalt surface.



0 to **400 rpm**



### F-REX FULLY HYDRAULIC JOINT CUTTER WITH EXTRACTION

The fully hydraulic system delivers consistent cutting results from start to finish. There is no belt drive or wear on driving elements – meaning minimal maintenance and operating costs.

Whether adjusting the speed of the grouting blade, the dynamics of the steering or the speed of the machine – everything can be controlled hydraulically.

The new extraction system automatically adjusts to the cutting depth.

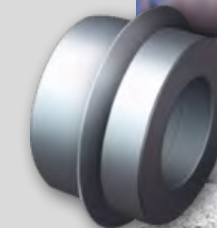


### JOINT IMPRESSION WHEEL

The joint impression wheel is used to create a consistent joint gap quickly and efficiently using an existing roller.

Easy attachment to the roller saves a lot of time and money.

The joint impression wheel creates a constant joint width during compaction, providing the perfect conditions for hot grouting in the transition from new to old.



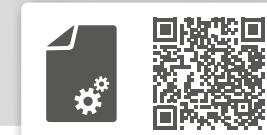
**SUPER-FAST  
JOINT PRODUCTION**

### JOINT POSITIONING TAPE

The Nadler joint positioning tape revolutionises the positioning of joints in rolled asphalt surfaces.

The positioning tape can be pulled out after the asphalt has been laid. What remains is a clean joint for grouting.

The innovative Nadler joint positioning tape is available in sizes of 40x15 mm and 50x20 mm. A self-adhesive version of the 40x15 mm size is also available.

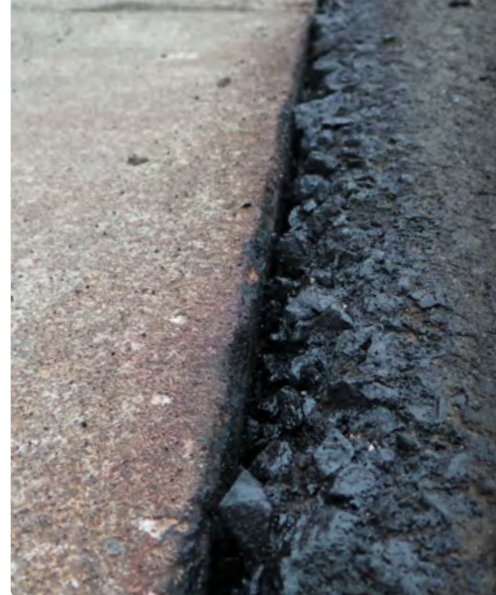






## JOINT & CRACK PREPARATION

Hot-air lances and joint drying equipment for cleaning and preparing cracks and joints



### KOMP MINI & SL

The devices in the Komp series combine hot air lance and compressor in one device.

The combination of powerful air compressors with the advanced design of the Rupprecht hot air lance eliminates the need for a bulky construction site compressor – without compromising quality.



	KOMP Mini	KOMP SL
Motor	4.8 kW (6.5 PS) petrol	9.7 kW (13 PS) petrol
Stroke volume	approx. 600 l/min	approx. 1200 l/min
Hot air temperature	0-600 °C smooth adjustment	
Firing	11 kg propane gas canister	
Gas consumption	1.5 - 2 kg/h	
Weight (without gas canister)	approx. 80 kg	approx. 165 kg
Dimensions (LxWxH)	1150 x 700 x 1080 mm	1300 x 830 x 1200 mm

**+** OPTIONALLY WITH DRIVING ASSISTANCE



**NO EXTERNAL COMPRESSOR NEEDED**



## “RISSEBOY” HOT AIR LANCE

All-purpose tool for drying, cleaning and preparing joints and cracks for subsequent hot grouting.

The sophisticated design of the heating unit from Richard Rupprecht with separate air ducts guarantees perfect temperature stability and therefore optimum blow-out results.

The robust lightweight design with integrated gas canister holder means you can work comfortably and with minimal effort on every construction site.

An additional module to offset the nozzle is available for working along walls and sides.



**ALL IN 1**

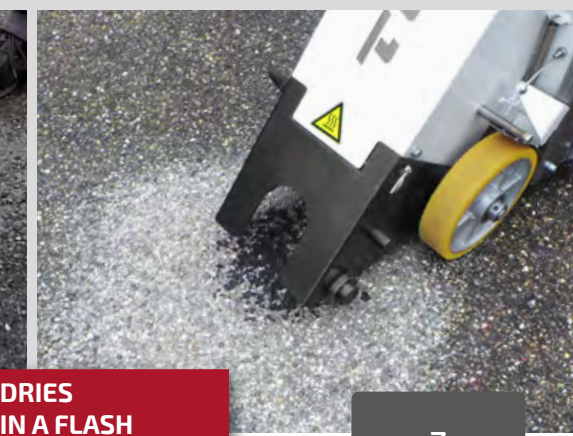
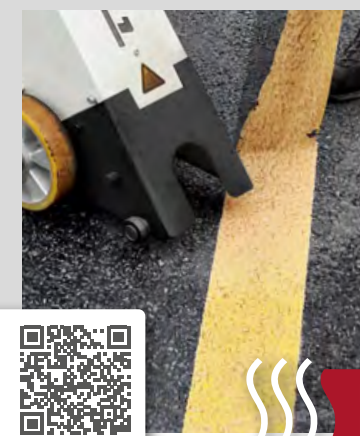
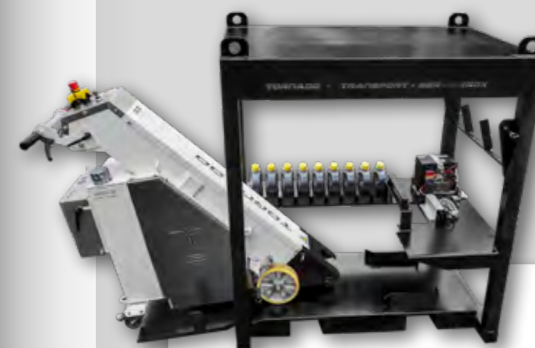
**ONE HOT AIR LANCE FOR EVERY JOB**

## TORNADO

Hot blower for drying and de-icing joints, asphalt and concrete surfaces on road construction sites.

Equipped with a high-performance turbine, the unit generates a powerful, flameless hot air stream for pore-deep drying and gentle removal of temporary marking materials.

The TORNADO is delivered in a special transport and service box with EU pallet dimensions for easy handling.



**DRIES IN A FLASH**





## GROUTING TECHNOLOGY

Handy equipment and machines to increase your installation speed and quality.



### COMBI KETTLE KK50

The Combi Kettle combines the melting and grouting processes in a single device and is used as a versatile tool for grouting joints and repairing cracks.

The clever design allows grouting work to be carried out with unmatched flexibility and quality.

The robust lightweight construction and the integrated crane and clamping lugs allow both mobile use and use as a stationary hot grouting kettle.

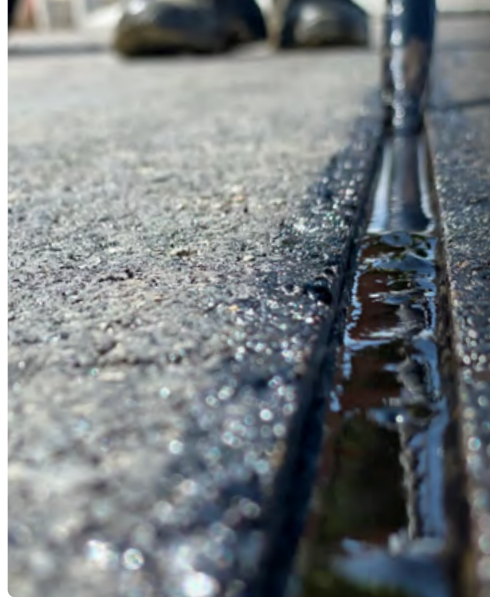
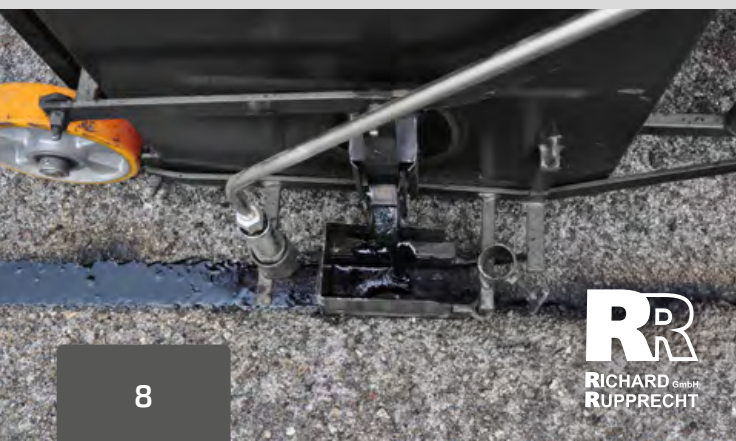


Optionally available with **temperature control** and **driving assistance**.  
Also available as a **STATIONARY KETTLE!**



**ALL IN 1**  
**HEAT+ POUR**  
WITH ONE DEVICE

**ADD ANY EXTRAS YOU WANT**



## ZSK & GROUTING EQUIPMENT

### ZSK grouting funnel

Handy and flexible tool for grouting joints and cracks with hot grouting compounds.

The sophisticated design means grouting work can be carried out with great flexibility and high quality, even in confined spaces.

### Grouting equipment

From grout block tongs to pouring cans – we have all the equipment you need for every grouting task.



## LARGE KETTLES RICHARD RUPPRECHT

The agitator kettles have an exceptionally robust design and fast heating times thanks to double-walled grouting body with air circulation. Simple and safe operation ensures optimum performance on site.

All agitator kettles are individually designed and precisely tailored to your requirements.



 up to 230 litres

**ALL IN 1**  
**EVERYTHING ON ONE TRAILER**



## LARGE KETTLES LINNHOFF & HENNE

Indirectly heated cookers with and without thermal oil for fast and gentle heating of bitumen hot grouting compounds.

Available as truck body, truck unload system or as a trailer chassis (1 & 2-axle models available).



 up to 700 litres

**Quick heating time**  
1h  
3h  
2h







## HOT GROUTING COMPOUNDS

Quality hot grouting compounds for all applications from joint grout to sheet pile grouting with maximum yield.



TESTED  
QUALITY



STURDY  
PACKAGING

### NADLER JOINT GROUT N2

Hot-applied joint grout, compliant with DIN EN 14188-1 Type: N2 (low flexibility). Nadler joint grout guarantees a permanently elastic joint seal with up to 25% movement absorption and meets the requirements of TL/TP Fug-StB 15.

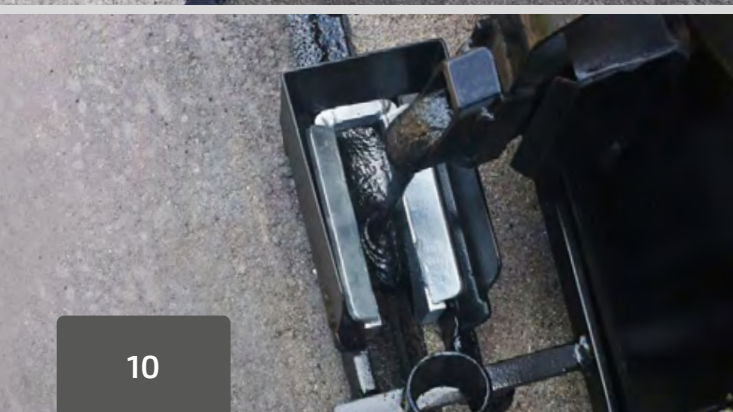
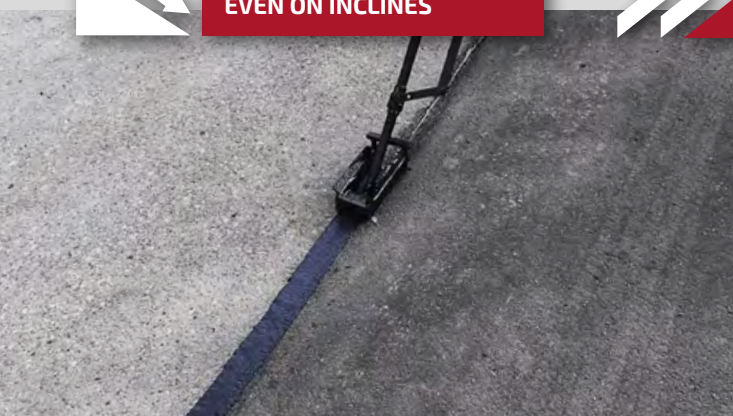
It has exceptional yield thanks to its uniquely low density (1.08 g/cm<sup>3</sup>) – and therefore delivers more metres per kg!



EXCELLENT APPLICATION  
EVEN ON INCLINES



MORE METERS  
THANKS TO HIGH YIELD



## MORE GROUTING COMPOUNDS

### PLASTER GROUTING COMPOUND

Compliant with TL Fug StB 15

15 kg box



### TRACK GROUTING COMPOUND

Compliant with TL Fug StB 15

12 kg box



### BRIDGE GROUTING COMPOUND

Compliant with DIN EN 14188-1 type N1

10 kg box



### RAIL GROUTING COMPOUND

Compliant with TL Fug StB 15

35 kg box



### EDGE SEALING COMPOUND

Compliant with ZTV Asphalt-StB 07/13 & TL Sbit-StB 15

25 kg box



### GROUTING COMPOUND FOR BIOGAS SYSTEMS

DiBT approval for LAU systems (systems for storing, filling and handling substances hazardous to water)

25 kg/10 kg box



### SEAM GROUTING COMPOUND

Compliant with TL Fug StB 15 & TL Sbit-StB 15

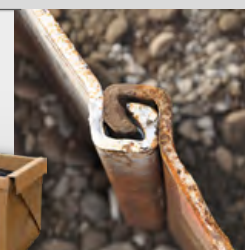
12 kg box



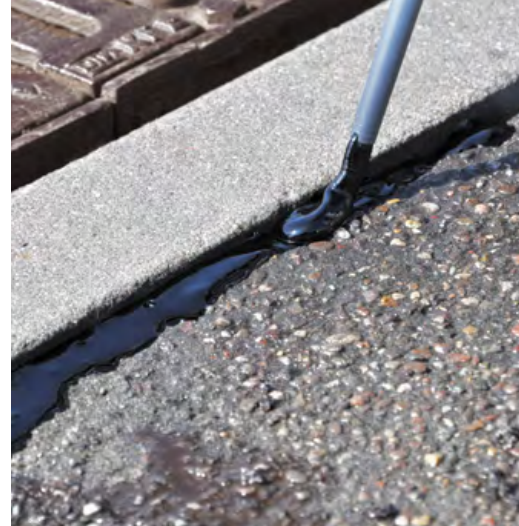
### SHEET PILE GROUTING COMPOUND FOR SHEET PILE INTERLOCKS

Compliant with DIN EN 14188-1 type N2 (low flexibility)

11 kg box







## OTHER PRODUCTS

Helpful additional products such as strewing material, PE cord and cold grouting compound.

## STREWING MATERIAL

Permanent non-slip strewing material for hot and cold grouting compounds for repairing cracks and grouting joints in asphalt surfaces.

The innovative, highly abrasion-resistant plastic granulate produces a permanently rough surface, as it forms an optimum bond with bituminous grouting compounds.

Thanks to its relatively low density, it cannot sink into the grouting compound.



## SPREADER

For use with strewing sand and granulate for strewing joint grout. The output quantity and strewing width can be adjusted on this handy tool.

The swivel wheel makes it a flexible tool that can be used to strew irregular crack lines.

For reliable removal, the spreader has a vibrating function, which can be turned off for easier handling during transport.



## PE CORD

The PE inlay cord is used as backfill when grouting joints. It is designed to prevent the grout from adhering to the base of the joint and to ensure the required grouting depth.

To meet requirements of the application, the PE inlay cord is made of high-quality, closed-cell polyethylene foam and is heat-resistant up to 200 °C for a short time.

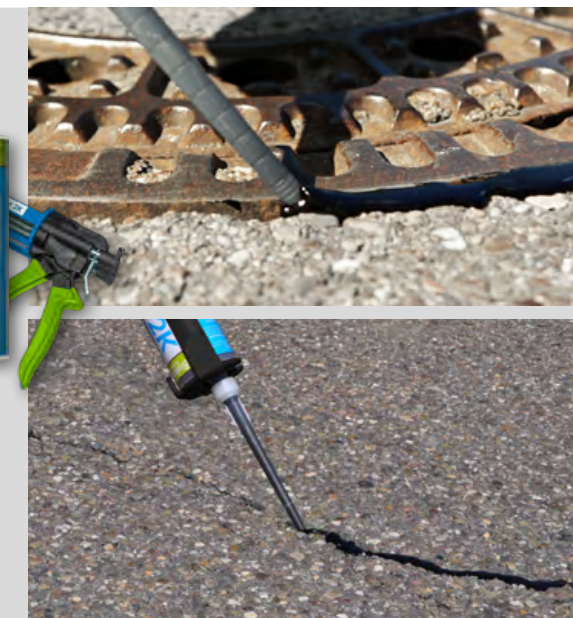


## COLD GROUT

### BIOLAST 2K SYSTEM

Cold processable, 2-component grouting compound based on reactive bitumen. This innovative cold grouting compound offers not only fast and uncomplicated processing but also excellent resistance to heat, cold, ageing and weathering.

**Biolast 2K** comes with great permanent elasticity and plasticity. Thanks to excellent durability on asphalt and many other solid building materials, **Biolast 2K** is versatile for use in many different applications.



## PROMATIC TITANIUM

### Hand-held gas burner with PIEZO ignition

Extremely lightweight hand-held gas burner. The unique ON/OFF function in the handle provides maximum safety at work.

The bayonet lock means you can change the burner faster than any other burner.

The 360° rotatable hose connection prevents the hose from twisting and lets you work stress-free.







## NEW PRODUCT

The latest equipment, tools & machines



## USER TRAINING

Increase the quality of your work with trained personnel.



### A WORLD FIRST IN JOINT CUTTING TECHNOLOGY

#### F-REX THE FULLY HYDRAULIC MULTIFUNCTION JOINT CUTTER WITH UNRIVALLED EXTRACTION SYSTEM

- The fully hydraulic machine delivers consistent cutting results from start to finish.
- No belt drive and no wear on driving elements mean that the F-REX is virtually maintenance-free.
- Powerful 56 hp engine and exceptionally sturdy "Made in Germany" design deliver maximum performance while working free of stress and with minimal effort
- Change over from normal cut to diagonal cut or flush to wall cut in seconds – more metres in the same time
- Comes with new extraction system, so there is almost no heating of the cutting blades – giving cutting blades an unrivalled service life (up to 10,000 m per blade set)



### Specialist user training for JOINT AND CRACK GROUTING

We train you to close cracks and joints effectively to reduce further damage and warranty defects in the future.

#### **i** AFTER TRAINING, YOU WILL KNOW HOW TO GROUT JOINTS AND CRACKS AND CAN GET GOING STRAIGHT AWAY!



### USER-CENTRED TRAINING

- Training package divided into theory and practice
- User-oriented and hands-on – the course participants get their hands dirty too
- Test and proof of training
- Immediate increase in the quality of work, which means: More performance with more durable installation quality with the same personnel in the same time!

### EXPERTS FROM PRACTICAL EXPERIENCE

- 20 years of know-how
- Trainers with experience & passion
- Tips & tricks from the pros
- The latest techniques







SPREADING

# ASPHALTPASSION

CONTACT



**GEORG TROMPLER**  
EXPORT MANAGER

+49 178 - 77 99 261  
export @ strassentechnik.de

**NADLER STRASSENTECHNIK GMBH**  
FRAUNHOFERSTRASSE 3-5  
D-85301 SCHWEITENKIRCHEN

+49 84 44 - 92 400 - 60  
+49 84 44 - 92 400 - 40

# STRASSENTECHNIK.DE



FACEBOOK



INSTAGRAM



YOUTUBE



LINKEDIN



NADLER